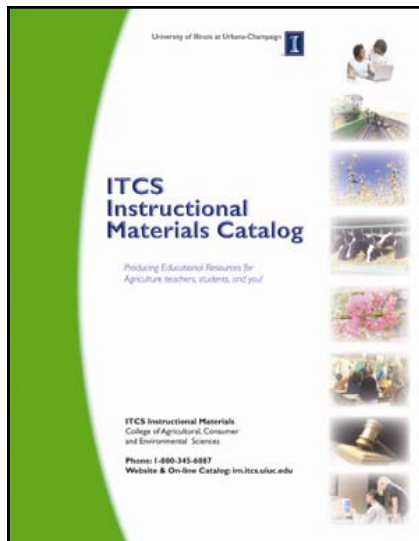




Volume 67, No. 1

September 2008

*Blue catalog numbers
hyperlink to our
e-commerce store*



New Catalog Available

The new and updated catalog is now available online at <http://im.itcs.uiuc.edu/>. Simply click on the catalog link at the center of the page and select from the viewing options. You can view the entire catalog in one file or select individual sections. Note that most judging materials and record book materials can be found under the miscellaneous section.

This year's catalog has been completely redesigned to enhance user accessibility. It includes 62 pages of instructional resources designed for teachers, students, and you.

Please feel free to share your comments with us concerning the new layout. *NRW*

News and Notes



Grain Rings Available

NEW

Sample Grain Rings (Z7002) are now available for purchase. They are updated annually and include a sample ring for each of the grains evaluated in the Agronomy Career Development Event. Each set includes approximately 2 cups of corn, soybeans, oats, or wheat with the appropriate containments included. A key is also included with reasons for placing the class.

Once they are sold out they will not be available again until August of 2009. The Sample Grain Rings sell for \$42.50 and can be ordered by referring to the tear sheet. *NRW*

Inside this issue

Contact the Staff	6
Calendar	8
Tear Sheet	9
Feed Prices	10



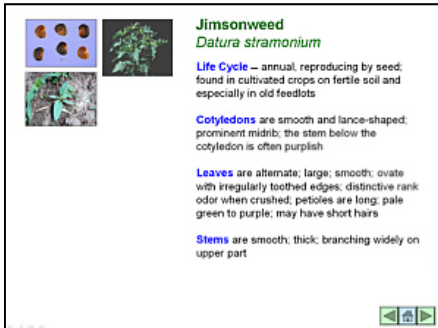


Weed Identification

This is a PowerPoint CD-ROM for teaching weed identification. It includes all the weeds on the Illinois Association of Vocational Agriculture Teachers weed identification list (2007 revision). Presentations include 1) the regular set with images and text descriptions of the weeds, 2) a practice set without weed names appearing by the images, and 3) a set that is an interactive quiz presentation which allows the user to choose an image to answer a question.

This revision includes 1) weeds added for the 2007 event, 2) expanded descriptions for life cycles and areas where the weeds grow, 3) seedling descriptions, and 4) more photographs, including many seed and seedling photographs.

In all, there are nearly 700 frames on this CD. Weeds described on the CD include:



- | | |
|-----------------------------------|----------------------------|
| Barnyardgrass | Honeyvine milkweed |
| Bitter nightshade | Horsenettle |
| Broadleaf plantain | Horseweed (Marestail) |
| Buckhorn plantain | Ivyleaf morningglory |
| Bull thistle | Jimsonweed |
| Burdock | Johnsongrass |
| Canada thistle | Ladythumb smartweed |
| Carpetweed | Large crabgrass |
| Cheat | Musk thistle |
| Chicory | Peppergrass |
| Common chickweed | Perennial sowthistle |
| Common cocklebur | Pigweeds (Redroot, Smooth) |
| Common lambsquarters | Prickly lettuce |
| Common mallow | Prickly sida |
| Common milkweed | Prostrate knotweed |
| Common mullein | Purslane |
| Common ragweed | Quackgrass |
| Curly dock | Shattercane |
| Daisy fleabane | Shepherd's-purse |
| Dandelion | Stinkgrass |
| Eastern black nightshade | Tall morningglory |
| Fall panicum | Velvetleaf |
| Field bindweed | Waterhemp |
| Field pennycress | Wild carrot |
| Flower-of-an-hour (Venice mallow) | Wild garlic |
| Foxtail barley | Wild mustard |
| Giant foxtail | Wild parsnip |
| Giant ragweed | Wild sunflower |
| Goosegrass | Woolly cupgrass |
| Green foxtail | Yarrow |
| Hedge bindweed | Yellow foxtail |
| Hemp dogbane | Yellow nutsedge |
| Hemp (Marijuana) | Yellow woodsorrel |

MDS707b *Weed Identification* sells for \$77.00

MDS707b-10 Quiz Pack is a set of 10 identical CD-ROMs with only the quizzes and interactive quizzes. Useful to issue to students for self study in the agronomy classroom, the school computer lab, or at home.

MDS707b-10 *Weed Identification Quiz Pack* sells for \$225.00; both items are listed on the tear sheet.



Agronomy CDE Resource Set

Contains ITCS resources displayed at the 2007 IAVAT Conference. These resources support team training for these Agronomy CDE areas:

- Written exam
- Weed ID
- Crop ID
- Placing classes
- Practicums—insects and soils

For a complete listing of what is in the tub, go to im.itcs.uiuc.edu and follow the link to AGRON-08 *Agronomy CDE Resource Set*.

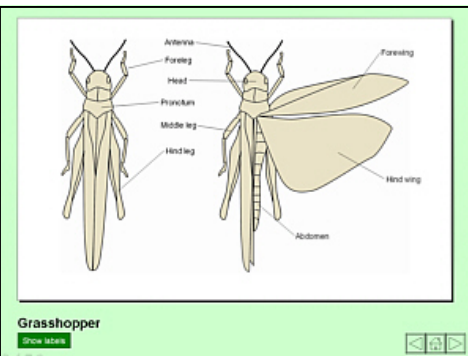
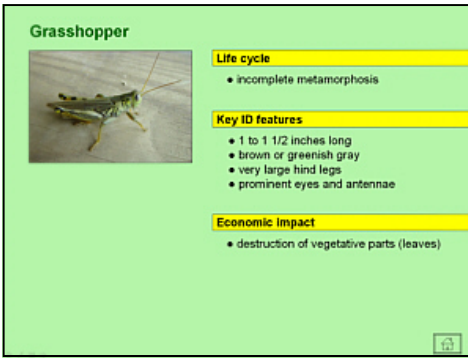
AGRON-08 sells for \$650.00 and is available for ordering on the tear sheet.

Ordering Record Books

We receive questions from teachers who are not sure of the record book sections they need to order. Our reply recommends that teachers order one **R2006 EZ Records** for each student in the department and all record book materials are available. When teachers order paper record books we recommend that teachers order one **R9800 Records of My Supervised Agriculture Enterprise Program** basic book with cover (white pages) for each student who will be keeping records, one (1) **R9801 Animal Enterprise section** (yellow pages) for each animal production enterprise in your department, one (1) **R9802 Business Enterprise section** (blue pages) for each placement or non-production enterprise in your department, one (1) **R9803 Crop Enterprise section** (green pages) for each crop production enterprise in your department, and one (1) **R9818 Research Agreement for Agriscience** (salmon pages) for each agriscience enterprise in your department. Example; a student with two (2) market steers, 5 sows, 7 acres of corn, a home garden, is placed at the local veterinary clinic, and is doing a tenderness evaluation of pork chops. This student will require one (1) **R2006 EZ Records** or one (1) **R9800** (basic book), two (2) of **R9801** (for beef and swine), one (1) **R9802** (for placement), two (2) of **R9803** (for corn and garden), and one (1) **R9818** (for research project). *DW*

Section Meetings

ITCS staff has attended as many fall section meetings as our schedule will accommodate. We would like suggestions for new materials and revisions of existing materials. Revisions are assigned a priority rating as we ask your patience as we complete the revisions. If you have ideas that would assist ITCS to provide the materials you need, please contact Nick Wherley or Dave Wilson. If your section would like to have an ITCS representative attend a section meeting to provide a program for new teachers, or materials, please contact us at ITCS. *DW*



Insect Identification

NEW

This is a PowerPoint CD-ROM for teaching insect identification. It includes all the insects on the Illinois Association of Vocational Agriculture Teachers Agronomy Career Development Event insect identification list. Presentations include 1) the regular set with images and text descriptions of the insects, 2) a practice set without insect names appearing by the images, and 3) a set that is an interactive quiz presentation that allows the user to choose an image to answer a question. Also includes a short presentation on insect anatomy, insect life cycles, and economic injury. Teachers will like the Quiz Planner for creating multiple quizzes for classroom use. In all, there are more than 150 frames on this CD.

Insects described on the CD include:

Alfalfa weevil
 Aphid
 Armyworm larva
 Assassin bug
 Bean leaf beetle
 Blister beetle
 Chinch bug
 Corn earworm larva
 Corn rootworm larva
 Cricket
 Cutworm larva
 European corn borer larva
 Flea beetle
 Grain weevil
 Grasshopper
 Green lacewing

MDS708 *Insect Identification* sells for \$30.00 and is listed on the tear sheet.

State Horse Career Development Event

The State Horse CDE will be held September 20, 2008, at the Black Hawk Community College - East Campus near Kewanee, IL. Schools are allowed to enter one team in the reasons division and one team in the non-reasons division. Extra students are not allowed to judge. Rules for the event are on the 2008-09 Chapter Resources CD-ROM and are also available at this site. Registration will begin at 7:30 a.m., with instructions at 8:45 a.m. and the event will begin promptly at 9:00 a.m. Scantron cards will be used for the event.

Registration is as follows: For IAVAT members the fees are \$7.00 per participant for non-reasons participants and \$9.00 per participant for reasons participants (includes lunch). For nonmembers the fees are \$28.00 per participant for non-reasons participants and \$30.00 per participant for reasons participants (includes lunch). Fees are due at the time of registration. *NRW*

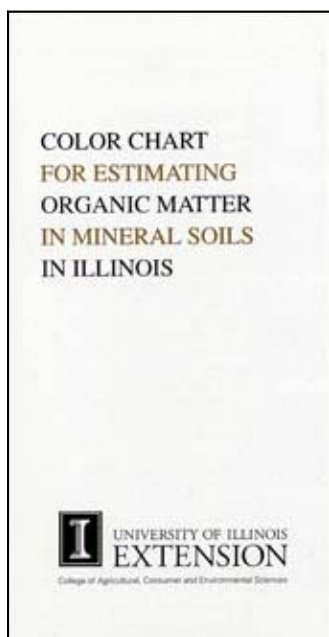


Weed Seed Samples Set

This set of 42 weed seed samples was updated in 2007 to align with the updated list. [Z7004a Weed Seed Samples](#) comes in a convenient storage box, includes a key to the samples, and contains:

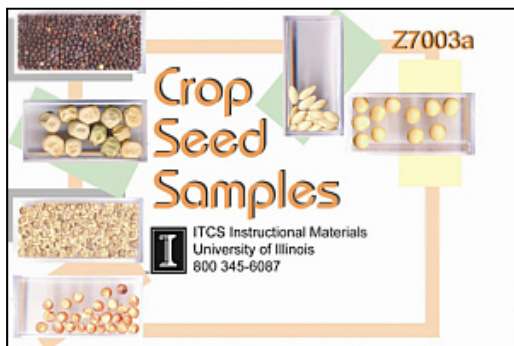
Barnyardgrass	Johnsongrass
Buckhorn plantain	Ladysthumb smartweed
Burdock	Large crabgrass
Chicory	Musk thistle
Common cocklebur	Peppergrass
Common lambsquarters	Prickly sida
Common mallow	Purslane
Common milkweed	Quackgrass
Common mullein	Redroot pigweed
Common ragweed	Shattercane
Curly dock	Shepherd's-purse
Dandelion	Velvetleaf
Fall panicum	Waterhemp
Field bindweed	Wild carrot
Field pennycress	Wild mustard
Giant foxtail	Wild oats
Giant ragweed	Wild parsnip
Green foxtail	Wild sunflower
Horseweed (marestail)	Woolly cupgrass
Ivyleaf morningglory	Yellow foxtail
Jimsonweed	Yellow nutsedge nutlets

[Z7004a Weed Seed Samples](#) sells for \$109.00 and is listed on the tear sheet.



Color Chart for Estimating Organic Matter in Mineral Soils in Illinois

This handy pocket-sized chart helps you get an accurate estimate of the amount of organic matter in your soil. Item [AG1941](#) is available for \$1.75 each or as item number [AG1941-PK](#), a pack of 100 color charts for \$50.00. This publication is an important resource for teaching soil judging.



Crop Seed Samples Set

This set of 41 crop seed samples was updated in 2007 to align with the updated list. [Z7003a Crop Seed Samples](#) comes in a convenient storage box, includes a key to the samples, and contains:

Alfalfa	Peanut
Alsike clover	Perennial ryegrass
Barley	Popcorn
Birdsfoot trefoil	Pumpkin
Broccoli	Red clover
Bromegrass	Redtop
Canola	Rice
Corn	Rye
Cotton	Safflower
Cucumber	Soybean
Fescue	Sudangrass
Grain sorghum	Sugar beet
Kentucky bluegrass	Sunflower
Ladino clover	Sweet clover
Lespedeza	Sweet corn
Lettuce	Timothy
Lima bean	Tomato
Muskmelon	Vetch
Oats	Watermelon
Orchardgrass	Wheat
Pea	

[Z7003a Crop Seed Samples](#) sells for \$40.00 and is listed on the tear sheet.

Contact the Staff

Orders (800) 345-6087
 FAX (217) 333-3917
im.itcs.uiuc.edu

Online ordering
pubsplus.uiuc.edu

Taft House
 Fax (217) 333-0005

Nick Wherley, Animal Sciences
wherley@uiuc.edu
 (217) 244-5170

Dave Wilson, Agricultural Mechanics
dkwilson@uiuc.edu
 (217) 244-5171



User Name

Password

 Search[Home](#)[Teacher
Toolbox](#)[Ag Ed
News](#)[Curriculum
Resources](#)[Ag Ed
Programs](#)[Career
Information](#)[Contact Your
Legislator & ISBE](#)[Administrator
Guidebook](#)[About
Ag Ed](#)

ABOUT HOME

 [ADMINISTRATOR
GUIDEBOOK](#) [FCAE FCAE](#) [AGENCIES &
ORGANIZATIONS](#) [WHY SUPPORT
AG ED](#) [FUTURE OF AG ED](#) [F.A.Q.'S](#) [WEBSITE
FEEDBACK](#)**[Nick Wherley](#)****ITCS**wherley@uiuc.edu

Weekly Messages

Last 5 messages

[8/22/2008](#)[5/5/2008](#)[4/21/2008](#)[4/2/2008](#)[3/3/2008](#)[all messages](#)**[ITCS Message-8/22/2008](#)****Friday, August 22, 2008**

Items in this message include:

1. Welcome Back
2. EZ Records Subsidy
3. Paper Record Book Subsidy
4. Grain Rings Available

Welcome Back

ITCS Instructional Materials would like to welcome you back to the new school year. We look forward to serving you again this year and wish you a prosperous year. Please feel free to contact us if we can assist you in any way. For the latest news from ITCS and the Illinois Agriculture Education community please review *News & Notes*, our bimonthly newsletter starting in September.

EZ Records Subsidy

The FCAE project is once again subsidizing EZ Records (R2006) at \$3.00 per access code for Illinois residents. This is a limited time offer that will cease once funds are depleted. Teachers are encouraged to order their access codes in a timely fashion in order to take advantage of the subsidized price. Please only order the number of access codes needed for the current school year.

Paper Record Book Subsidy

Paper Record Books are now available at a subsidized price through funds from the FCAE project. The basic book (R9800) can be ordered free of charge for a limited time. This subsidy does not include the enterprise or extra pages. Shipping charges still apply for all paper record book orders. Please only order the number of basic books needed for the current school year.

Grain Rings Available

Grain Rings are now available for purchase. They are updated annually and include a sample ring for each of the grains evaluated in the Agronomy Career Development Event. As of August 21st less than 50 rings were available for purchase. Once they are sold out they will not be available again until August of 2009. To place an order please call 1-800-345-6087, fax your order to 217-333-3917, or email pubsplus@uiuc.edu

[Join the AgEd Mailing List](#)To be removed from this list, contact jmcoleany@agriculturaleducation.org

**ITCS Instructional Materials
University of Illinois at
Urbana-Champaign**

**ORDERS
Phone 800 345-6087
Fax 217 333-3917**

*Resources for agricultural
education*

News and Notes is published 5 times annually (September, November, January, March, and May) by ITCS Instructional Materials at the University of Illinois. Articles submitted for publication should conform to *News and Notes* specifications (available on request) and be clearly identified. Articles submitted by the 20th day of the month preceding each issue will be considered for publication in the next issue of *News and Notes*. For additional information, contact *News and Notes* Editor, ITCS Instructional Materials, University of Illinois, (217) 244-5170.

Dates to Remember 2008 Calendar of Events

September

- 5 Illinois State Florists' Association Contest
- 15 PAS Board Meeting, Springfield
- 18 FFA Board of Directors Meeting
- 20 State Horse CDE, Black Hawk Community College, East Campus

October

- 4 IAVAT Board Meeting
- 22-25 National FFA Convention, Indianapolis, IN

November

- 15 Salute to Ag Day, UIUC
- 27 Thanksgiving, UIUC holiday
- 28 UIUC holiday

December

- 2-6 NAAE Convention, Charlotte, NC
- 24 Christmas Eve, UIUC holiday
- 25 Christmas, UIUC holiday
- 26 UIUC holiday

**September 2008
TEAR SHEET**

*Visit pubsplus.uiuc.edu to order items on our secure server
(credit cards and school purchase orders accepted;
prices subject to change)*

Qty.	Price	Amt.	Cat. No.	Description
_____	650.00	_____	AGRON-08	Agronomy CDE Resources Set
_____	1.75	_____	AG1941	Color Chart for Estimating Organic Matter in Mineral Soils
_____	50.00	_____	AG1941-PK	Color Chart for Estimating Organic Matter in Mineral Soils, pack of 100
_____	77.00	_____	MDS707b	Weed Identification CD-ROM
_____	225.00	_____	MDS707b-10	Weed Identification Quiz Pack (10 CD-ROMs)
_____	30.00	_____	MDS708	Insect Identification CD-ROM
_____	2.75	_____	R9800	Records of My Supervised Agricultural Experience Program
_____	2.50	_____	R9801	Animal Enterprise Record Sheets for SAE Programs
_____	2.50	_____	R9802	Business Enterprise Record Sheets for SAE Programs
_____	2.50	_____	R9803	Crop Enterprise Record Sheets for SAE Programs
_____	2.50	_____	R9818	Agriscience Enterprise Research Agreement for SAE Programs
_____	6.00	_____	R2006	EZ Records subscription
_____	42.50	_____	Z7002	Sample Grain Rings
_____	40.00	_____	Z7003a	Crop Seed Samples, 41 crops
_____	109.00	_____	Z7004a	Weed Seed Samples, 42 weeds

Name _____ Date _____ P.O. _____
 School _____ Email _____
 Address _____

Zip _____

Billing _____

F.E.I. No. _____ or S.S. No. _____ Phone _____
 (For schools or companies) (For individuals)

Minimum amount for a **charge order** (including shipping) is \$10.00. Checks should be made payable to the **UNIVERSITY OF ILLINOIS** but sent to Information Technology and Communication Services, 1917 S. Wright St., Champaign, IL 61820. For orders only call (800) 345-6087 or (217) 333-3871 or FAX (217) 333-3917 or send e-mail to pubsplus@uiuc.edu. We accept VISA and MasterCard.

***If payment is sent with this order, please include the following for shipping:**

		Subtotal	_____
For orders less than \$5 add	\$3.50	Shipping*	_____
For orders from \$5 to \$19.99 add	\$4.50		
For orders from \$20 to \$99.99 add	\$7.50		
For orders from \$100 to \$199.99 add	\$10.00		
For each additional \$100 add	\$4.50	TOTAL	_____

Monthly Feed Prices

Kinds of Feed	April 22	August 28
Corn, No. 2, shelled, bu. ¹	5.44	5.35
Corn, ground, shelled, bu.	5.58	5.49
Grain sorghum, bu. ²	4.87	4.50
Grain sorghum, ground, bu.	5.01	4.64
Oats, bu. ³	3.80	3.41
Oats, ground, bu.	3.90	3.51
Wheat, bu.	7.20	5.52
Soybean Meal, 48%, ton	330.80	374.25
Corn silage, ton ⁴	34.33	33.76
Hay, alfalfa, baled, ton ⁵	172.50	188.75
Hay, other, baled, ton ⁵	165.00	165.00
Straw, oat or wheat, ton ⁵	105.00	95.00

¹ Based on prices at country elevators in central Illinois.

² Based on prices at country elevators in southern Illinois.

³ Based on prices at CBOT.

⁴ Estimated silage value as opportunity cost of harvesting crop as grain.

⁵ Based on prices direct off the farm in central Illinois.