



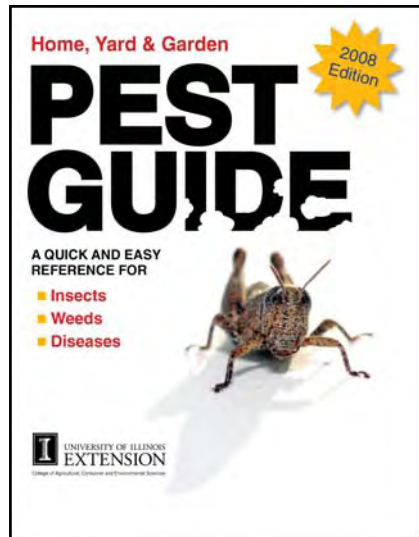
Volume 67, No. 2

November 2008

Blue catalog numbers  
hyperlink to our  
e-commerce store



# News and Notes



## Home, Yard & Garden Pest Guide

**NEW**

The new, revised edition of this popular resource includes up-to-date information on how to deal with insects, weeds, and diseases safely and effectively. The *Home, Yard & Garden Pest Guide* provides information on how to choose the right pesticides and handle chemicals with confidence. Non-chemical alternatives are included for most management strategies.

Contains:

- Easy-to-read charts and tables with chemical applications and current herbicide recommendations
- Weed, insect, and disease information grouped by type of problem
- Integrated Pest Management strategies and pesticide safety

The 2008 edition includes revised chemical recommendations and updated information. Also new is a handy index that helps you quickly find the information you need.

**C1391-08** *Home, Yard & Garden Pest Guide* sells for \$24.95.

### Coming Soon.....

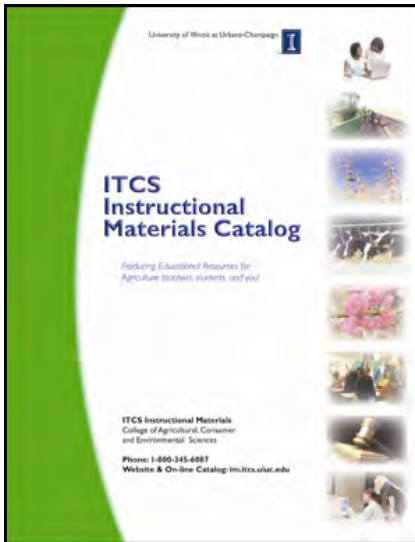
Take note that a new edition of the *Illinois Agronomy Handbook*, last revised in 2002, will be published early in 2009. No comparable publication exists among the Midwestern land-grant universities, and it's a reference work you don't want to be without. The new edition, which will include color photographs and graphics for the first time, will present new nitrogen guidelines, new data from research, and information needed to keep up with the rapidly changing world of crop and soil management and crop protection in Illinois.

Watch future issues of *News & Notes* for more details.

#### Inside this issue

Contact the Staff	8
Calendar	10
Tear Sheet	11
Feed Prices	12





## New Catalog Available

The new and updated catalog is now available online at <http://im.itcs.uiuc.edu/> Simply click on the catalog link at the center of the page and select from the viewing options. You can view the entire catalog in one file or select individual sections. Note that most judging materials and record book materials can be found under the miscellaneous section.

This year's catalog has been completely redesigned to enhance user accessibility. It includes 62 pages of instructional resources designed for teachers, students, and you.



## Grain Rings Available

**NEW**

**Less than 30 available as of 10/31/08**

Sample Grain Rings (Z7002) are now available for purchase. They are updated annually and include a sample ring for each of the grains evaluated in the Agronomy Career Development Event. Each set includes approximately 2 cups of corn, soybeans, oats, or wheat with the appropriate containments included. A key is also included with reasons for placing the class.

Once they are sold out they will not be available again until August of 2009. The Sample Grain Rings sell for \$42.50 and can be ordered by referring to the tear sheet. *NRW*

## ITCS Advisory Council Meeting

The next ITCS Instructional Materials Advisory Council Meeting is scheduled for November 5<sup>th</sup> from 3:30 pm to 5:30 pm. We will return to our normal fall meeting format and be meeting on campus. We will also provide a call in option for those unable to attend in person. If you are on this committee and have not been contacted or are interested in participating in the meeting, please email me at [wherley@illinois.edu](mailto:wherley@illinois.edu) *NRW*



## *Agronomy CDE Resource Set*

Contains ITCS resources displayed at the 2007 IAVAT Conference. These resources support team training for these Agronomy CDE areas:

- Written exam
- Weed ID
- Crop ID
- Placing classes
- Practicums—insects and soils

For a complete listing of what is in the tub, go to [im.itcs.uiuc.edu](http://im.itcs.uiuc.edu) and follow the link to AGRON-08 *Agronomy CDE Resource Set*.

**AGRON-08** sells for \$650.00 and is available for ordering on the tear sheet.

## *Agronomy CDE Resource Set Winner*

Congratulations to Gail Webb from North Boone High School. She was the winner of the *Agronomy CDE Resource Set* given away by ITCS. We hope that the instructional material is beneficial for training Mrs. Webb's team for the Agronomy Career Development Event. Thank you to everyone who participated in the drawing and we hope to continue to give away beneficial door prizes in the future. *NRW*

## **State Horse Judging CDE Results — Non-Reasons Division**

September 20, 2008 Blackhawk College, East Campus

72 schools, 60 teams, 246 individuals

### **Top Teams**

Geneseo	1120
Okaw Valley	1116
Rock Ridge	1112
Newark	1112
Decatur Area Voc.	1100
West Prairie	1099
Stillman Valley	1095
Aledo	1093
Oregon	1085
Elmwood	1084
Delavan	1084

### **Top Individuals**

Allison Hardas, Chrisman	393
Tad Chatten, Farmington	384
Rebecca Palmer, Oregon	382
Sydney Uphoff, Okaw Valley	382
Sara Pearson, Stillman Valley	380
Allie Hickernell, Newark	380
Kayla Weikert, Rockridge	380
Christina Tiedeman, Geneseo	379
Shiloh Lueschow, Elmwood	379
Heather Gregoire, Watseka	378

## State Agronomy Career Development Event

The 2008 State Agronomy CDE will be Saturday, December 13. Registration will begin at 8:30 a.m. at the Stock Pavilion on Pennsylvania Avenue at the University of Illinois, Urbana-Champaign. Group leaders will lead their groups to Turner Hall immediately following the 9:45 announcements at the Stock Pavilion. Refer to the *Agronomy Career Development Event Rules* and *General Rules* for more information. Scantron score sheets will be used. Participants will need to bring a clipboard and a couple of pencils for filling in the Scantron sheets. The following references will help prepare a team:

[MDS707b](#) *Weed Identification* is composed in Microsoft PowerPoint. It includes all the weeds on the IAVAT weed identification list (2007 revision).

[MDS707b-10](#) is the *Weed Identification Quiz Pack*. Useful for student drill and practice at school or at home.

[U4073](#) *The Weed Factor* is an 8-page publication that discusses how weeds impact agriculture. Lists Illinois primary noxious, secondary noxious, and common weeds that are likely to occur in corn, soybeans, wheat, and oats.

[J790](#) *Crop Judging* is a judging manual that describes judging wheat, soybeans, corn, oats, silage, and hay.

[MDS708](#) *Insect Identification* is composed in Microsoft PowerPoint and should run equally well on PCs or Macs. It includes all the insects on the IAVAT Agronomy CDE insect identification list.

[AGRON-08](#) is the *Agronomy CDE Resources Tub* which contains a wide variety of resources that will be helpful for training a team for the state event.

**Note: This year's contest includes the soil practicum.**

This year's event is hosted by the University of Illinois Department of [Crop Sciences](#).

## State Horse Judging CDE Results — Reasons Division

September 20, 2008 Blackhawk College, East Campus  
16 schools, 14 teams, 54 individuals

### Top Teams

Hardin County	1361
Orion	1335
Seneca	1316
Midland	1313
Eureka	1309

### Top Individuals

Cori Elliott, Stockton	466
Natalie Carr, Hardin County	464
Cassie O'Hara, Hiawatha	464
Lauren Wells, Herscher	457
Cassie Catlett, Orion	457
Kyle Hinrichsen, Eureka	453
Haley Condon, Seneca	453
Ashley Adams, Midland	450
Jackie Reed, Hardin County	449
Josi Reed, Hardin County	448

## State Dairy Foods Career Development Event

The University of Illinois will be the site of the 2008 IAVAT Dairy Foods Career Development Event on Saturday, December 13th. Registration will begin at 8:30 a.m. at the Stock Pavilion on Pennsylvania Avenue. IAVAT registration fees are \$7.00 per participant for IAVAT members and \$28.00 per participant for nonmembers. Please review the Dairy Foods Career Development Event Rules and General Rules for Career Development Events before attending the event. Participants will need to bring a clipboard and a couple of #2 pencils for filling in the Scantron sheets. The following references will help prepare a team:

- [J250c Judging and Identifying Dairy Products](#). ITCS Instructional Materials, 1401 South Maryland Dr., Urbana, IL 61801 (800) 345-6087 FAX (217) 333-3917
- *Career Development Events Handbook 2006-2010*. National FFA Organization, P.O. Box 68960, 6060 FFA Drive, Indianapolis, IN 46268-6060
- *Hoard's Dairyman*. Publisher's address: P.O. Box 801, Fort Atkinson, WI 53538 Phone (414) 563-5551. School subscription offered at a discount. Issues used are from September of previous year to August of current year.
- *Dairy Facts* (updated annually). Available from the International Dairy Foods Association online only at [www.idfa.org](http://www.idfa.org) Use issue of previous year of contest.
- California Mastitis Test. Available from NASCO, 901 Janesville Ave., Fort Atkinson, WI 53538. Call (800) 558-9595 and request catalog item 06059N or visit [www.enasco.com](http://www.enasco.com)
- *Dairy Outlook and Situation Report* (six issues per year). Use issues beginning with August of previous year through July of current year of event. Available for free at [www.aae.wisc.edu/future/front\\_outlook.htm](http://www.aae.wisc.edu/future/front_outlook.htm) NRW

## 2008 State Forestry CDE Results

October 4, 2008 Southern Illinois University  
13 schools, 12 teams, 54 individuals

### Top Teams

Cumberland	1398
Prairie Central	1376
Tuscola	1337
Olney	1301

### Top Individuals

Dylan Walker, Tuscola	507
Rollin Wenger, Prairie Central	486
Jacob Sappington, Cumberland	480
Devan Henderson, Cumberland	473
Simon Burgener, Olney	464
Johnny Rudin, Prairie Central	446
Shannon Breen, Tuscola	446
Jake Hewing, Cumberland	445
Samantha Ropp, Prairie Central	444

## Record Keeping Notes:

**Renewing your subscriptions.** It is time to start thinking about renewing subscriptions for *EZ Records*. When an *EZ Records* subscription gets close to expiration, a message will appear on the Record Book Main Page. This message is a reminder that the end of the subscription period is fast approaching. The message appears 30 days prior to the end of the subscription and counts down from 30 to 0 days. Users should acquire a new access code for the renewal process. The countdown clock will also display a *Renew* link. Clicking on the link opens the renew account window with a data cell to enter the new access code. Clicking the Validate Code button renews the account. The Record Book Main Page opens providing the user access to their records for another 14 months. **DO NOT ATTEMPT TO RENEW AN ACCOUNT UNTIL THE RENEW LINK APPEARS.** Access codes are available from ITCS Instructional Materials. Contact ITCS at (800) 345-6087, FAX (217) 333-3917, or mail orders to ACES Information Technology and Communication Services, 1917 S. Wright St., Champaign, IL 61820.



If an account has expired, records are not lost. When a user attempts to log in to their *EZ Records* account that has expired, the renew window opens providing a place for the user to enter a new access code. Clicking the Validate Code button will renew the account and provide the user access to their records.

**EZ Records security.** *EZ Records* data is stored in a server located in the College of Agricultural, Consumer and Environmental Sciences and is very secure. Each individual account is only as secure as the password the user selects. To avoid someone other than the user from accessing their account, their password should not be shared with other students. **We recommend using unique passwords that are kept private and not shared.**

**Enterprise naming.** One of the features of the web-based record book is the opportunity to extract state data. Previous generations of students had the option to name their record book enterprises whatever name they wished; we suggest an enterprise name that includes a little more information, avoid using proficiency categories as enterprise names.

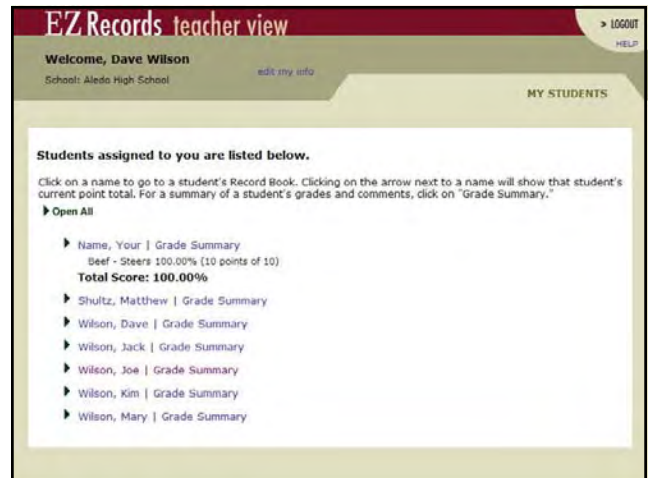
For example, a student who has an enterprise named heifers may not provide as much information to determine if the heifers are beef or dairy. Another example is a crop enterprise named Wilson farm but does not indicate what crop is being grown. Our recommended naming sequence includes entering the names such as Beef – steers, Beef – show calves, Beef – feeder cattle, Dairy – heifers, Dairy – cows, Corn – Wilson farm, Soybeans – Wise farm, Soybeans – Miles farm.

The agribusiness category may also contain vague enterprise names, and including a more complete name specific to the enterprise will be beneficial in the future. Students should avoid naming an enterprise with a proficiency award area title; the enterprise name should be more specific. An example might include an enterprise named Floriculture, when the student is actually employed at the Old English Hedge Florists. A better name may include the name of the floral shop, 'Floriculture – Old English Hedge Florists'. A student mowing lawns would not name the enterprise Turf Management but rather a name that might include more specific information, such as 'Blue Ribbon Lawn Care'.

Agriscience records should be named with the name of the major category for experiment followed by the experiment name. Example categories include; Biochemistry/Microbiology/Food Science, Botany, Engineering, Environmental Science, or Zoology. Sample enterprise names may include; Botany – Effect of light on germination, Food Science – Temperature effects on growth of bread mold, Engineering – How temperature affects oil viscosity.

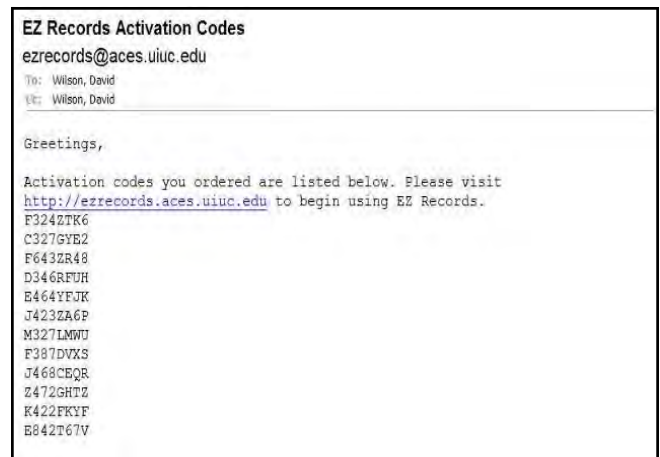
continued.....

**Teacher View accounts.** ITCS continues to provide complimentary *EZ Records* Teacher View access codes to teachers. When a school orders *EZ Records*, a Teacher View access code with a few directions is e-mailed to the teacher. The teacher view account provides access to *EZ Records* student record books electronically. Teachers have the opportunity to make comments on each record book page and may score each page as part of a grading schedule. The grades may be changed at the discretion of the teacher at any time during the grading period. The software also tabulates a total score for each enterprise, core record pages, and creates a grand total score which is expressed as a percentage of the total possible. A scoring and comment summary is available and may be printed to provide a hard copy. Teachers wishing to receive a Teacher View access code are encouraged to contact Dave Wilson at ITCS.



**Teachers changing schools.** When teachers change schools they should contact Dave Wilson at ITCS to acquire a new Teacher View access code. The codes are specific to a school and require the teacher at a new school to create a new Teacher View account. They are also required to instruct their students to edit their record books, selecting their new teacher at the school.

**Receiving record book access codes.** Teachers have informed ITCS that they sometimes do not receive their *EZ Records* access codes. *EZ Records* access codes are sent to teachers via e-mail. If you do not receive your access codes in a timely period, be sure to contact us and we will determine a method to issue the access codes. Our e-mail list may contain an error or some teachers activate filters that block or send the messages to a junk mail folder. This occurs due to an automatically generated email system that delivers *EZ Records* access codes.



**EZ Records tips.** Printing a record book is accomplished by printing each page individually. Use similar procedures that you would use to print a document from any Windows program. The pull down menu under File may be used. Some users prefer to use keyboard strokes to print. The Ctrl+P command will also start the printing procedure. An additional printing command may be initiated through the print icon located in your tool bar. This command will typically send the print task to your default printer.

An accepted practice for generating the monthly totals for Wage/Labor Summary requires users to total the entries on page 5A, B, C, or S (Record of Experiences). When totaling the monthly entries, the totals may become difficult to identify as they mix with the daily entries. To make the monthly totals easier to identify insert 10 asterisk symbols in front of the Monthly total entry followed by 10 more asterisk symbols (\*\*\*\*\*November totals\*\*\*\*\*) then place the totals in the appropriate column. Use the copy and paste function to move values from the Record of Experiences page to the Wage/Labor Summary page.

When naming the columns on the Record of Experiences page use **Unpaid** and **Paid** as the column headings. DW

**Optional Preregistration for Dairy Foods Career Development Event** due by December 1, 2008.

Entry for Section \_\_\_\_\_ from \_\_\_\_\_ High School

A maximum of 5 members are allowed for each team with the top 3 individuals' scores comprising the team score. Event scheduled for Saturday, December 13, 2008.

**NONREFUNDABLE** entry fee enclosed (circle A or B):

A – Member IAVAT \_\_\_\_\_ Participants @ \$ 7.00 per participant \$ \_\_\_\_\_

B – Nonmember IAVAT \_\_\_\_\_ Participants @ \$28.00 per participant \$ \_\_\_\_\_

Send preregistration form and entry fees to State IAVAT Office, 3221 Northfield Dr., Springfield, IL 62702.

**Optional Preregistration for Crops Career Development Event** due by December 1, 2008.

Entry for Section \_\_\_\_\_ from \_\_\_\_\_ High School

A team shall consist of 3 members with all 3 individuals' scores comprising the team score. Event scheduled for Saturday, December 13, 2008.

**NONREFUNDABLE** entry fee enclosed (circle A or B):

A – Member IAVAT \_\_\_\_\_ Participants @ \$ 7.00 per participant \$ \_\_\_\_\_

B – Nonmember IAVAT \_\_\_\_\_ Participants @ \$28.00 per participant \$ \_\_\_\_\_

Send preregistration form and entry fees to State IAVAT Office, 3221 Northfield Dr., Springfield, IL 62702.

## Contact the Staff

Orders (800) 345-6087  
FAX (217) 333-3917  
[im.itcs.uiuc.edu](mailto:im.itcs.uiuc.edu)

Online ordering  
[pubsplus.uiuc.edu](http://pubsplus.uiuc.edu)

Taft House  
Fax (217) 333-0005

Nick Wherley, Animal Sciences  
[wherley@illinois.edu](mailto:wherley@illinois.edu)  
(217) 244-5170

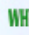


Dave Wilson, Agricultural Mechanics  
[dkwilson@illinois.edu](mailto:dkwilson@illinois.edu)  
(217) 244-5171





User Name Password  Search[Home](#)[Teacher  
Toolbox](#)[Ag Ed  
News](#)[Curriculum  
Resources](#)[Ag Ed  
Programs](#)[Career  
Information](#)[Contact Your  
Legislator & ISBE](#)[Administrator  
Guidebook](#)[About  
Ag Ed](#)

## ABOUT HOME

 [ADMINISTRATOR  
GUIDEBOOK](#) [FCAE FCAE](#) [AGENCIES &  
ORGANIZATIONS](#) [WHY SUPPORT  
AG ED](#) [FUTURE OF AG ED](#) [F.A.Q.'S](#) [WEBSITE  
FEEDBACK](#)

## [Nick Wherley](#)

### ITCS

[wherley@uiuc.edu](mailto:wherley@uiuc.edu)

### Weekly Messages

Last 5 messages

[9/2/2008](#)[8/22/2008](#)[5/5/2008](#)[4/21/2008](#)[4/2/2008](#)[all messages](#)

### ITCS Message-9/2/2008

**Tuesday, September 02, 2008**

#### Items in this message include:

1. New Catalog Available
2. September Issue of *News & Notes*
3. ITCS Instructional Materials Advisory Council Meeting

#### New Catalog Available

The new and updated catalog is now available online at <http://im.itcs.uiuc.edu/>. Simply click on the catalog link at the center of the page and select from the viewing options. This year's catalog has been completely redesigned to enhance user accessibility. Please feel free to share your comments with us concerning the new layout.

#### September Issue of *News & Notes*

The September Issue of *New & Notes* is now available online. It can be viewed by visiting ITCS Instructional Materials at <http://im.itcs.uiuc.edu/>. Click on the *News & Notes* link and select September 2008 from the list. Items featured in this issue include resources available for the Agronomy CDE, directions for ordering record books, and much more.

#### ITCS Instructional Materials Advisory Council Meeting

The next ITCS Instructional Materials Advisory Council Meeting is scheduled for November 5<sup>th</sup> from 3:30 pm to 5:30 pm. We will return to our normal fall meeting format and be meeting on campus. We will also provide a call in option for those unable to attend in person. Please watch for future messages with additional details.

[Join the AgEd Mailing List](#)To be removed from this list, contact [jmcclean@agriculturaleducation.org](mailto:jmcclean@agriculturaleducation.org)

**ITCS Instructional Materials  
University of Illinois at  
Urbana-Champaign**

**ORDERS  
Phone 800 345-6087  
Fax 217 333-3917**

*Resources for agricultural  
education*

*News and Notes* is published 5 times annually (September, November, January, March, and May) by ITCS Instructional Materials at the University of Illinois. Articles submitted for publication should conform to *News and Notes* specifications (available on request) and be clearly identified. Articles submitted by the 20<sup>th</sup> day of the month preceding each issue will be considered for publication in the next issue of *News and Notes*. For additional information, contact *News and Notes* Editor, ITCS Instructional Materials, University of Illinois, (217) 244-5170.

---

## **Dates to Remember 2008-09 Calendar of Events**

### **November**

- 6 PAS Fall Leadership Conference, Spoon River College
- 8 State Food Science & Technology CDE, Pleasant Hill High School
- 15 Salute to Ag Day, UIUC
- 15 State Agriculture Sales CDE, Parkland College
- 27 Thanksgiving, UIUC holiday
- 28 UIUC holiday

### **December**

- 2-6 NAAE Convention, Charlotte, NC
- 13 State Agronomy CDE, UIUC
- 13 State Dairy Foods CDE, UIUC
- 24 Christmas Eve, UIUC holiday
- 25 Christmas, UIUC holiday
- 26 UIUC holiday

### **January**

- 1 New Year's Day, UIUC holiday
- 19 Martin Luther King, Jr. Day, UIUC holiday
- 23 Made for Excellence Conference

### **February**

- 6 PAS Annual Conference, Richland College
- 16 State Parliamentary Procedure CDE, Lincoln Land Community College

**November 2008  
TEAR SHEET**

*Visit [pubsplus.uiuc.edu](http://pubsplus.uiuc.edu) to order items on our secure server  
(credit cards and school purchase orders accepted;  
prices subject to change)*

<b>Qty.</b>	<b>Price</b>	<b>Amt.</b>	<b>Cat. No.</b>	<b>Description</b>
_____	650.00	_____	AGRON-08	Agronomy CDE Resources Set
_____	24.95	_____	C1391-08	Home, Yard & Garden Pest Guide
_____	4.50	_____	J250c	Judging, Identifying and Scoring Dairy Products
_____	4.50	_____	J790	Crop Judging
_____	77.00	_____	MDS707b	Weed Identification CD-ROM
_____	225.00	_____	MDS707b-10	Weed Identification Quiz Pack (10 CD-ROMs)
_____	30.00	_____	MDS708	Insect Identification CD-ROM
_____	2.75	_____	R9800	Records of My Supervised Agricultural Experience Program
_____	2.50	_____	R9801	Animal Enterprise Record Sheets for SAE Programs
_____	2.50	_____	R9802	Business Enterprise Record Sheets for SAE Programs
_____	2.50	_____	R9803	Crop Enterprise Record Sheets for SAE Programs
_____	2.50	_____	R9818	Agriscience Enterprise Research Agreement for SAE Programs
_____	6.00	_____	R2006	EZ Records subscription
_____	9.00	_____	U4073	The Weed Factor
_____	42.50	_____	Z7002	Sample Grain Rings

Name \_\_\_\_\_ Date \_\_\_\_\_ P.O. \_\_\_\_\_  
 School \_\_\_\_\_ Email \_\_\_\_\_  
 Address \_\_\_\_\_  
 \_\_\_\_\_ Zip \_\_\_\_\_  
 Billing \_\_\_\_\_  
 \_\_\_\_\_  
 F.E.I. No. \_\_\_\_\_ or S.S. No. \_\_\_\_\_ Phone \_\_\_\_\_  
 (For schools or companies) (For individuals)

Minimum amount for a **charge order** (including shipping) is \$10.00. Checks should be made payable to the **UNIVERSITY OF ILLINOIS** but sent to Information Technology and Communication Services, 1917 S. Wright St., Champaign, IL 61820. For orders only call (800) 345-6087 or (217) 333-3871 or FAX (217) 333-3917 or send e-mail to [pubsplus@uiuc.edu](mailto:pubsplus@uiuc.edu). We accept VISA and MasterCard.

**\*If payment is sent with this order, please include the following for shipping:**

		Subtotal	_____
<b>For orders less than \$5 add</b>	<b>\$3.50</b>	Shipping*	_____
<b>For orders from \$5 to \$19.99 add</b>	<b>\$4.50</b>		
<b>For orders from \$20 to \$99.99 add</b>	<b>\$7.50</b>		
<b>For orders from \$100 to \$199.99 add</b>	<b>\$10.00</b>		
<b>For each additional \$100 add</b>	<b>\$4.50</b>	TOTAL	_____

## Monthly Feed Prices

<b>Kinds of Feed</b>	<b>August 28</b>	<b>October 23</b>
Corn, No. 2, shelled, bu. <sup>1</sup>	5.35	3.47
Corn, ground, shelled, bu.	5.49	3.61
Grain sorghum, bu. <sup>2</sup>	4.50	2.41
Grain sorghum, ground, bu.	4.64	2.55
Oats, bu. <sup>3</sup>	3.41	2.55
Oats, ground, bu.	3.51	2.65
Wheat, bu.	5.52	3.51
Soybean Meal, 48%, ton	374.25	255.55
Corn silage, ton <sup>4</sup>	33.76	21.90
Hay, alfalfa, baled, ton <sup>5</sup>	188.75	197.50
Hay, other, baled, ton <sup>5</sup>	165.00	177.50
Straw, oat or wheat, ton <sup>5</sup>	95.00	110.00

<sup>1</sup> Based on prices at country elevators in central Illinois.

<sup>2</sup> Based on prices at country elevators in southern Illinois.

<sup>3</sup> Based on prices at CBOT.

<sup>4</sup> Estimated silage value as opportunity cost of harvesting crop as grain.

<sup>5</sup> Based on prices direct off the farm in central Illinois.

