



Volume 66, No. 5

May 2008

Blue catalog numbers
hyperlink to our
e-commerce store

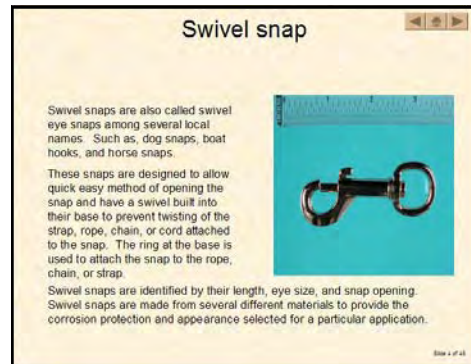


News and Notes



MDS 320 Hardware and Fastener Identification

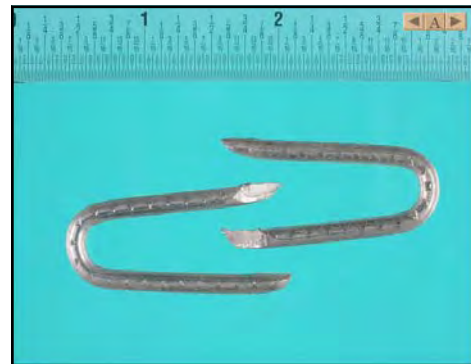
This is a PowerPoint CD-ROM for teaching hardware and fastener identification. The material is presented in unique categories with an image available within each category. The categories include an image with a name, an image with a description, an image without a name (for quizzing), and an interactive quiz. The interactive quiz sessions present a question with three possible selections, followed with the correct answer to provide student feedback. Each category is linked to a master navigation slide providing smooth navigation to view different presentations. This presentation contains over 180 different hardware or fastener items in 1650 frames.



This is a unique teaching resource for instruction, a form of student self study, or an evaluation instrument. Internal navigation links the table of contents with each item and permits the user an efficient method of viewing this large collection of information.

Each category includes a quiz and key. They may be printed from the CD-ROM.

Categories on the CD include:



- Bolts
- Braces, Brackets, and Hinges
- Miscellaneous Fasteners
- Nails
- Nuts
- Other Hardware
- Screws
- Washers
- All Hardware and Fasteners

See the tear sheet for prices and ordering.
DW

Inside this issue

Contact the Staff	8
Calendar	9
Tear Sheet	10
Feed Prices	12



Preregistration for Agricultural Mechanics Career Development Event

Illinois Agricultural Mechanics Career Development Event is scheduled for **Tuesday, May 13, 2008**. Teams and individuals should check in at the Agricultural Engineering Sciences Building on the campus of the University of Illinois at Urbana-Champaign between 9:00 and 9:45 a.m. The event will begin at 10:00 a.m. This event is limited to the winning team or alternate team from each section's Agricultural Mechanics Event plus first-place individuals in each phase of the event who are not on the section team. No more than one member from one school may compete in any phase of the event. Preregistration (deadline of April 29) was required for this event.



Read the *Agricultural Mechanics Career Development Event Rules* booklet carefully. Note that each section is expected to provide two adult helpers. Both students and teachers or helpers must bring and wear safety glasses, and all participants must bring required equipment and clothing to the event if they expect to participate. Particular attention should be given to the requirements for welding equipment and clothing. Leather high-top shoes are required. Avoid tennis shoes and jogging shoes, which may not be all leather. **Survey participants are to required to bring a clipboard for recording field notes. Carpentry participants are required to provide their own sawhorses in addition to other equipment.** *DW*



Illinois mAGic Kit – now available

The *Illinois mAGic Kit* (AK-28) is now available from ITCS Instructional Materials. It includes 8 math, 10 English language arts, 11 social studies, and 7 science lessons focused on the state of Illinois. Lessons can be selected to match your region of the state, such as northern, western, or southern Illinois.

The kit includes the necessary components for each lesson. It can be purchased as a complete package that includes components, a printed curriculum manual, and a CD-ROM version of the manual. Or the CD-ROM version of the manual (AK-28.2) is available for purchase separately. Please see the tear sheet for pricing. *NRW*

Form	Page Graded?	Form	Page Graded?
Research Agreement	15	Cash and Noncash Expenses	115
Research Purpose	25-1	School Instruction/Review of Literature	125
Costs/Budget	25-2	Inventory of Non-Depreciable Items	135
Research Plan	35	Labor and Management Summary	145
Procedures Used	45	Evaluation Factors	155
Experiences	55	Abstract	165
Research Skills, Competencies and Knowledge	65	Human Vertebrate Endorsement	175
Wages/Labor Summary	75	Non-Human Vertebrate Endorsement	185
Receipts	95	Hazardous Material Waiver Form	195

EZ Records - Agriscience Record Book

Agriscience enterprises now have a new set of record book insert pages, available as part of EZ Records and as printed record book inserts. Specific pages have been created providing tables and spaces for recording agriscience enterprise activity. A new set of insert pages is required for each enterprise (experiment). Selected additional pages are available for the printed record book, such as the record of experiences, literature review, conclusion, and procedure used.

EZ Records makes the insert pages available without any additional expense— just select the agriscience category when creating a new enterprise. *DW*

2008 Illinois Horticulture CDE

Floriculture Practicum Identifying and Controlling Plant Disorders

Scenario: The judge is a greenhouse grower who needs help. The plant specimens are brought in to determine the problem. If treatment is necessary, the student will describe the preparation and application of the treatment.

Judges ask these questions; each question is worth 10 points. Maximum correct score is 100 points. Participants should not touch the plants.

1. What type of plant is this?

Petunia or a bedding plant crop

2. Based on the general appearance of the plants in front of you, could these plants be used in a hanging basket?

Yes, the plant has a trailing habit that makes it suitable for a hanging planter.

3. What is unusual about the foliage of the plant in front of you?

The correct answer: Instead of being solid green the foliage has two colors (variegated); green and yellow.

Commercial answer: The plants are exhibiting nutrient stress symptoms in the upper canopy.

4. What do you think caused the unusual foliage colors?

The plant has a nutrient deficiency. Because the plant is showing interveinal chlorosis in the upper foliage, the deficiency is likely caused by a lack of iron uptake.

5. What can I do about the problem?

Cultural control: Apply a fertilizer with iron as a micronutrient.

Commercial answer: Check to be sure the iron deficiency is not caused by a high media pH. If the pH is high adjust it with an acidic fertilizer containing iron as a micronutrient. Alternately one could use chelated iron to provide a suitable level of the nutrient.

6. Next to the pots are pictures of handheld pH and electrical conductivity (E.C.) meters. Why is measuring pH and E.C. of greenhouse crops on a weekly basis important?

Measuring pH and E.C. of the rooting media provides clues about the nutrient status of crops in the greenhouse. Weekly monitoring allows growers to track nutrient status over time, not negative trends, and adjust pH or fertility rates (E.C.) before visual symptoms appear on the crop.

7. If I touch the leaves, they are sticky. Is this character related to the diagnosed problem?

No, many petunia cultivars have glands that exude sticky compounds thought to be defense mechanisms against insect feeding.

8. If I look at the yellow cards in the pots, I see some insects attached to them. What are the circled insects?

They are fungus gnats.

9. How are these yellow cards used in a greenhouse?

Yellow sticky cards are used to monitor flying greenhouse pests, such as fungus gnats. Growers can then determine what insects are present and decide if the pest needs to be managed.

10. What are these small yellowish spheres on the soil surface?

They are granules of a slow release fertilizer such as Osmocote.

2008 Illinois Horticulture CDE

Plant material identification

Specimen number	ID number	Common name
1.	109	Lily
2.	165	Spider Plant
3.	203	Leatherleaf Fern
4.	215	Chives
5.	222	Bleeding Heart
6.	256	Forsythia
7.	233	Ajuga
8.	282	Serviceberry
9.	200	Florist's Chysanthemum
10.	144	Croton
11.	124	New Guinea Impatiens
12.	234	Barren Strawberry
13.	278	Red Maple
14.	130	Snapdragon
15.	210	Salal
16.	248	Anthony Waterer Spirea
17.	128	Regal Geranium
18.	260	Red Twig Dogwood
19.	181	Christmas cactus
20.	194	Alstroemeria
21.	146	Dumbcane
22.	111	Tuberous Begonia
23.	273	Horsechestnut
24.	232	Shasta Daisy
25.	304	Mugo Pine
26.	140	Chinese Evergreen
27.	267	European Beech
28.	207	Pittosporum
29.	224	Coreopsis
30.	139	Boston Fern
31.	173	Wandering Jew
32.	180	Bromeliad
33.	270	Flowering Dogwood
34.	286	Tulip Tree
35.	228	Lamb's Ear
36.	225	Daylily
37.	293	Meserve Holly
38.	240	English Ivy
39.	121	Lobelia
40.	266	Eastern Redbud
41.	163	Rubber Plant
42.	188	Kalanchoe
43.	216	Lavender
44.	154	Mother-in-law's Tongue
45.	127	Petunia
46.	291	Boxwood
47.	168	Striped Dracaena
48.	115	Celosia
49.	178	African Violet
50.	253	Cranberry Bush Viburnum

Horticulture Science Kit

NEW

The *Horticulture Science Kit* (AK-26) is a new kit available for secondary students. The lessons and activities are designed as introductory material to plant taxonomy, growing media, plant pests, breeding and genetics, and impact of biotechnology. It is appropriate for use with middle and high school students.

The kit was created through cooperation with industry, community colleges, and the agriculture literacy program. Each lesson is formatted in a similar manner to the mAGic kits, including state standards, student worksheets, and time progressive activities.

The kit includes the necessary components for each lesson. It can be purchased as a complete package that includes components, a printed curriculum manual, and a CD-ROM version of the manual. Or the CD-ROM version of the curriculum manual (AK-26.2) is available for purchase separately. Please see the tear sheet for pricing. *NRW*

Horticulture Careers Kit

NEW

The *Horticulture Careers Kit* (AK-27) is a new kit available to introduce students to the different areas of the horticulture field. The lessons and activities are created to familiarize individuals with the culture, terms, and responsibilities in each employment area. This includes mock designs, interviews, and other activities.

The lessons in the kit include:

- Growing Opportunities in Horticulture
- Landscape Design
- Careers in Turf Management
- Retail Industry
- Research and Development
- Selling: Landscape Lingo
- Applying Art to Plant Design
- Plant Patents
- Marketing

The kit includes the necessary components for each lesson. It can be purchased as a complete package that includes components, a printed curriculum manual, and a CD-ROM version of the manual. Or the CD-ROM version of the curriculum manual (AK-27.2) is available for purchase separately. Please see the tear sheet for pricing. *NRW*

News from WIU Collegiate FFA

The WIU Collegiate FFA, once again, has been very busy this past month. On April 2nd, we hosted the District III FFA Public Speaking CDE. We also hosted the WIU Invitational FFA Agriculture Mechanics and Horticulture CDEs on April 9th. Many FFA members participated in these events and took home numerous awards to their chapters. Our chapter also organized the departmental wide Agriculture Olympics contest for everyone in the agriculture department. Eleven teams participated, representing most of the agriculture clubs on campus. We had events such as an egg toss, hay bale toss, stick pony relay and a pie eating contest. The pies for the eating contest were auctioned off and whoever bought the pie got to pick a person to eat it. This part of the Ag Olympics raised over \$700 for the agriculture department scholarship fund. One of the Alpha Gamma Sigma Fraternity teams was the winner of the entire contest. The WIU Collegiate FFA hopes that everyone has a good last few weeks of school and a safe summer.

mAGic Kits and Curriculum CD-ROMs **NEW**

All the Multidisciplinary Agricultural Integrated Curriculum (mAGic) Kits are now available for purchase. If you have ordered a kit and have not received it in a timely manner, please contact our customer service representative at 1-800-345-6087.

The kits include the necessary components for each lesson. They can be purchased as a complete packages that include components, a printed curriculum manual, and a CD-ROM version of the manual. Or the CD-ROM version of the curriculum manual is available for purchase separately. The Curriculum CD-ROMs contain a PDF version of the printed activity guide found in each kit. You do not need to purchase a CD-ROM separately when purchasing a complete kit. The CD-ROM is included in the printed notebook.

Please see the tear sheet for prices of each kit. Note that Illinois residents receive special pricing due to development funds from the Board of Education. They should select the product number with ILAK– prefix.
NRW

AK-20 Poultry mAGic Kit

Students will uncover interesting facts about U.S. poultry production through exercises and hands-on experiments. They'll learn about the anatomy and nutritional value of an egg. They'll also learn about the history of egg production and find out how poultry dishes are prepared around the world.

AK-21 Insect mAGic Kit

Students will learn about the impact of insects on crop production through a variety of lessons and activities. Mapping exercises let students follow butterflies on migration patterns. Students track a day in the life of an insect and learn about wingspan, life cycles, anatomy, and social hierarchy patterns of common insects.

AK-22 Soil mAGic Kit

Soils are alive, as students will discover through the lessons in this kit. Students will learn to conduct experiments in soil pH, create soil profiles, and understand the components of soil. They will also unveil the history of crop rotation and dig into the Dust Bowl.

AK-23 Dairy mAGic Kit

Hands-on exercises let students explore the process of using milk, acids, enzymes, and bacteria to make cottage cheese, yogurt, and ice cream. Students will find out how much milk one cow produces in its lifetime. They'll also dive into history, and they'll learn about issues of supply and demand in the dairy industry.

AK-24 Plant mAGic Kit

This kit offers problem-solving activities in plant propagation, production, and processing. Students will conduct experiments to learn about plant differences and plant ecosystems. They'll also sequence plant products, research the discoveries of George Washington Carver, and look at the impact of crops on the national economy.

AK-25 Machine mAGic Kit

Students will learn about the history of farm machinery and the impact of modern farming techniques on families and communities. They'll also learn how inventors John Deere and Cyrus McCormick helped shape modern agriculture. Hands-on exercises let students identify machinery parts and estimate farm machinery costs.

Record Keeping Notes:

Renewing EZ Records subscriptions. To renew a subscription to EZ Records the user will require a **new** access code. Access codes may be ordered from ITCS. **DO NOT TRY TO RENEW EZ RECORDS UNTIL NOTIFIED THAT THE SUBSCRIPTION IS WITHIN 30 DAYS OF EXPIRING.** A message will appear on the Record Book Main Page (in white text) notifying the user 30 days remain before the subscription expires. This message will count down the days prior to expiration. When the expiration notice appears a renew link also appears. Users may click on the **Renew** link. A window opens asking the user to enter the **new** access code. Enter the **new** access code and click the *Validate Code* button. This action completes the renewal procedure. When complete, the user is navigated to the Record Book Main Page and is able to continue working on their SAE records. Access to all record books is available with the newest record book being the Default record book. Other record book access is available from a pull down menu located near the upper right corner of the Record Book Main Page. EZ Records subscriptions are 14 months in length.

When a subscription has completely expired (14 months have passed) a new window appears. When the user enters their login, the software will automatically open the renewal window, requesting a **new** access code. Enter a **new** access code and click the *Validate Code* button to renew the account. Validating the access code renews the account and navigates to the Record Book Main Page. All previous record book data remains intact and within easy access by the user.

Managing access codes. Summer is often a time when school computers are updated and maintenance performed. To insure your access code records are not deleted you may choose to save the EZ Record files in a additional location, such as a USB drive, floppy disk, or CD-ROM. The codes should be saved in a secure location with a back-up copy. The back-up copy assures teachers will have access to their access codes should the computer crash or data be removed during maintenance. Creating a spreadsheet to record the access codes and their user names is another strong management tool. By entering your access codes into a spreadsheet, you have created a method of tracking the used and unused access codes.

Teachers share with us the importance of developing a strong management tool for the web based EZ Records access codes. Unused codes are viable for use when renewing or creating EZ Records accounts. By keeping a separate list of used access codes and unused access codes a teacher is prepared for distributing unused codes as the need arises. *DW*

Machinery Cost Estimates

The Department of Agricultural and Consumer Economics has a cost for using tractors, equipment, forage, and harvesting operations on Illinois farms. The per-hour costs for operating tractors is also available. Estimated costs for most machinery operations are higher this year. Estimates are available in the management section of farmdoc: <http://www.farmdoc.uiuc.edu/manage/index.asp> Scroll down the page to find the data. There are a lot of entries so you may need to exercise patience to find what you are look for.

The farmdoc web site also contains a lot of information on current farm management, such as fuel prices, commodity prices, livestock feed costs, and much more. This is a very good resource for teaching farm and business management. *DW*

2008 State Livestock Placings and Cuts

Class 1 Placing Cattle	1-4-2-3	Cuts 2-4-6
Class 2 Placing Sheep	4-3-1-2	Cuts 4-2-6
Class 3 Placing Swine	3-2-1-4	Cuts 4-3-3

	Keep	Cull
Class 9 Keep/Cull Swine	1-2-6-8	3-4-5-7
Points	17-12-13-8	6-0-2-0

Class 10 Keep/Cull Sheep	1-2-5-6	3-4-7-8
Points	18-7-17-8	4-0-4-0

Class 11 Keep/Cull Cattle	1-5-6-7	2-3-4-8
Points	6-13-18-13	2-0-0-5

Class 14 Cattle Grading	YG	QG
1.	3.5	High Choice
2.	2.5	Low Choice
3.	3.5	High Choice
4.	2.0	High Select
5.	2.0	High Select

2008 State Dairy Cattle Placings and Cuts

Class 1 Jersey Sr. Calf	2-3-1-4	Cuts 2-2-2
Class 2 Holstein Sr. 4 yrs.	4-2-1-3	Cuts 5-4-6
Class 3 Holstein Sr. 2 yrs.	3-2-4-1	Cuts 2-8-2
Class 4 Jersey 2 yrs.	3-1-4-2	Cuts 2-8-4
Class 5 Holstein Calves	3-2-1-4	Cuts 6-4-2
Class 6 Holstein Jr. 2 yrs.	1-3-2-4	Cuts 5-4-6
Class 7 Holstein 2 yrs.	4-2-1-3	Cuts 5-5-2
Class 8 Production Class	4-3-2-1	Cuts 8-2-2
Class 9 Pedigree Class	4-2-1-3	Cuts 4-6-5

Contact the Staff

Orders (800) 345-6087
 FAX (217) 333-3917
im.itcs.uiuc.edu

Online ordering
pubsplus.uiuc.edu

Taft House
 Fax (217) 333-0005

Nick Wherley, Animal Sciences
wherley@uiuc.edu
 (217) 244-5170

Dave Wilson, Agricultural Mechanics
dkwilson@uiuc.edu
 (217) 244-5171



**ITCS Instructional Materials
University of Illinois at
Urbana-Champaign**

**ORDERS
Phone 800 345-6087
Fax 217 333-3917**

*Resources for agricultural
education*

News and Notes is published 5 times annually (September, November, January, March, and May) by ITCS Instructional Materials at the University of Illinois. Articles submitted for publication should conform to *News and Notes* specifications (available on request) and be clearly identified. Articles submitted by the 20th day of the month preceding each issue will be considered for publication in the next issue of *News and Notes*. For additional information, contact *News and Notes* Editor, ITCS Instructional Materials, University of Illinois, (217) 244-5170.

Dates to Remember 2008 Calendar of Events

May

- 3 State Public Speaking CDE, ISU
- 6 State Agricultural Business Management Career Development Event
- 13 State Agricultural Mechanics Career Development Event, UIUC
- 26 Memorial Day, UIUC holiday

June

- 10-12 Illinois FFA Convention, Springfield
- 17-19 IAVAT Annual Conference, Springfield
- 23-25 NAAE Region IV Conference, Bowling Green, KY

July

- 4 Independence Day, UIUC holiday

**May 2008
TEAR SHEET**

*Visit pubsplus.uiuc.edu to order items on our secure server
(credit cards and school purchase orders accepted;
prices subject to change)*

Qty.	Price	Amt.	Cat. No.	Description
Kits				
_____	150.50	_____	AK-20	Poultry mAGic Kit
_____	350.25	_____	AK-21	Insect mAGic Kit
_____	403.25	_____	AK-22	Soil mAGic Kit
_____	313.25	_____	AK-23	Dairy mAGic Kit
_____	384.25	_____	AK-24	Plant mAGic Kit
_____	351.50	_____	AK-25	Machine mAGic Kit
_____	225.00	_____	AK-26	Horticulture Science Kit
_____	161.00	_____	AK-27	Horticulture Careers Kit
_____	500.00	_____	AK-28	Illinois mAGic Kit
_____	30.00	_____	AK-20.2	Poultry mAGic Curriculum CD-ROM
_____	30.00	_____	AK-21.2	Insect mAGic Curriculum CD-ROM
_____	30.00	_____	AK-22.2	Soil mAGic Curriculum CD-ROM
_____	30.00	_____	AK-23.2	Dairy mAGic Curriculum CD-ROM
_____	30.00	_____	AK-24.2	Plant mAGic Curriculum CD-ROM
_____	30.00	_____	AK-25.2	Machine mAGic Curriculum CD-ROM
_____	30.00	_____	AK-26.2	Horticulture Science Curriculum CD-ROM
_____	30.00	_____	AK-27.2	Horticulture Careers Curriculum CD-ROM
_____	30.00	_____	AK-28.2	Illinois mAGic Curriculum CD-ROM
_____	130.75	_____	ILAK-20*	Poultry mAGic Kit
_____	304.50	_____	ILAK-21*	Insect mAGic Kit
_____	350.50	_____	ILAK-22*	Soil mAGic Kit
_____	272.50	_____	ILAK-23*	Dairy mAGic Kit
_____	334.00	_____	ILAK-24*	Plant mAGic Kit
_____	305.50	_____	ILAK-25*	Machine mAGic Kit
_____	195.00	_____	ILAK-26*	Horticulture Science Kit
_____	140.00	_____	ILAK-27*	Horticulture Careers Kit

Other Products

_____	99.00	_____	MDS320	Hardware and Fastener Identification
_____	6.00	_____	R2006	EZ Records subscription

*Price available only to Illinois residents. Price subsidized by developmental funds from the Illinois State Board of Education.

Judging Card Update

As noted in the 2007 ITCS Instructional Materials catalog and as announced at IAVAT fall section meetings, this will be the last year we distribute judging cards. To date, these cards have sold out and will not be reprinted:

J690 Horticulture Identification Ring

J999.100 Regular Placing Cards

J999.102 Female Selection Class (Keep-Cull)

Name _____ Date _____ P.O. _____

School _____

Address _____

_____ Zip _____

Billing _____

F.E.I. No. _____ or call (800) 345-6087 for purchases by individuals Phone _____
(For schools or companies)

Minimum amount for a **charge order** (including shipping) is \$10.00. Checks should be made payable to the **UNIVERSITY OF ILLINOIS** but sent to Information Technology and Communication Services, 1917 S. Wright St., Champaign, IL 61820. For orders only call (800) 345-6087 or (217) 333-3871 or FAX (217) 333-3917 or send e-mail to pubsplus@uiuc.edu. We accept VISA and MasterCard.

***If payment is sent with this order, please include the following for shipping:**

		Subtotal	_____
For orders less than \$5 add	\$3.00	Shipping*	_____
For orders from \$5 to \$19.99 add	\$4.00		
For orders from \$20 to \$99.99 add	\$7.00		
For orders from \$100 to \$199.99 add	\$9.50		
For each additional \$100 add	\$4.00	TOTAL	_____



Monthly Feed Prices

Kinds of Feed	February 25	April 22
Corn, No. 2, shelled, bu. ¹	4.95	5.44
Corn, ground, shelled, bu.	5.09	5.58
Grain sorghum, bu. ²	4.66	4.87
Grain sorghum, ground, bu.	4.80	5.01
Oats, bu. ³	4.04	3.80
Oats, ground, bu.	4.14	3.90
Wheat, bu.	9.71	7.20
Soybean meal, 48%, ton	355.95	330.80
Corn silage, ton ⁴	31.24	34.33
Hay, alfalfa, baled, ton ⁵	162.50	172.50
Hay, other, baled, ton ⁵	160.00	165.00
Straw, oat or wheat, ton ⁵	90.00	105.00

¹ Based on prices at country elevators in central Illinois.

² Based on prices at country elevators in southern Illinois.

³ Based on prices at CBOT.

⁴ Estimated silage value as opportunity cost of harvesting crop as grain.

⁵ Based on prices direct off the farm in central Illinois.