



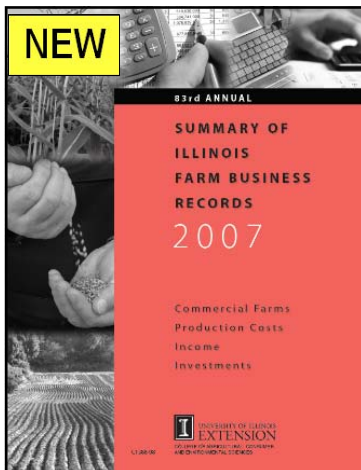
Volume 67, No. 3

January 2009

Blue catalog numbers
hyperlink to our
e-commerce store



News and Notes



83rd Annual Summary of Illinois Farm Business Records: 2007

The *Annual Summary* offers the information needed to spot market trends, make major financial decisions, and compare one farming operation to similar ones.

Published each fall, this valuable resource focuses on the previous year's economic farming data and gives an in-depth look at more than 6,500 Illinois farms. Collected over time, summaries provide a historical perspective and big-picture view of farming across the state.

Each edition covers:

- Per-acre return and cost figures
- Yearly changes in net farm income for grain and livestock enterprises and average yields
- Economic trends and patterns that provide benchmark figures for a wide range of expenses, including seed, pesticides, fertilizers, equipment, land, buildings, and labor.

Price: \$8.00

To order, visit our e-commerce site:
www.pubsplus.uiuc.edu/C1388-08.html

MB

DT200b Record Book Resource Package

NEW

As EZ Records was revised to improve its use and simplify some pages, DT200b was revised to reflect EZ Records changes. Additionally several new mini problems were added. Eight new mini problems featuring selected Core record book pages were also included. The mini problems contain the problems data, a student worksheet, and a teacher key. DT200b also contains 5 PowerPoint presentations for each of the record book sections; Agriscience, Animal, Agribusiness, Crop, and Core. A suggested grading rubric is provided for each record book section. The addition of the Core mini problems is a reflection of the suggestions and requests from teachers. Please see the tear sheet for ordering DT200b. DW

Inside this issue

Contact the Staff	9
Calendar	10
Tear Sheet	11
Feed Prices	12



Practice Problems for Record Books

NEW

This instructional resource provides practice problems for each record book insert category:

Agriscience — Beef Nutrition, Tenderness, and Flavor

Animals — 1) Beef-Show Steers 2) Swine

Agribusiness — 1) Turf 2) Placement: Ag Mechanics 3) Placement: Veterinary Assistant

Crops — Corn

Each category presents a set of record book data to be entered into a record book. The practice problems provide sample entries typical to the enterprise and include sample entries for FFA and leadership participation in the core record pages. Sample entries for each page provide student experience with the record book prior to starting their personal SAE record book experience. The placement enterprises display daily entries typical of a school co-op education program.

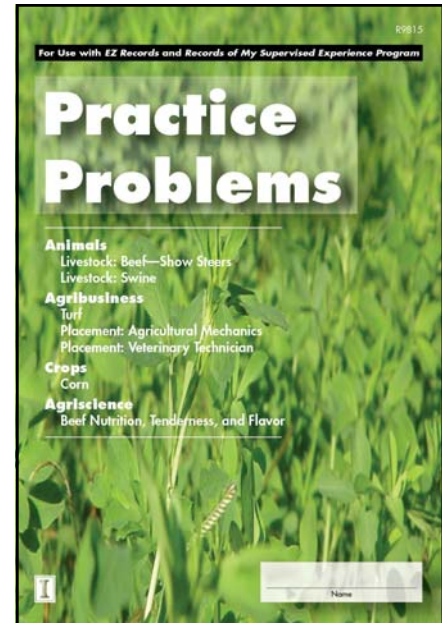
This unique teaching resource provides an opportunity for students to create a record keeping cycle that reinforces classroom instruction on creating and keeping SAE records. Teachers are able to select only the enterprises that apply to their students and community. One of the unique features of the practice problems is that the Core entries work together regardless of the enterprises selected. The record book *Practice Problem* provides several options for teaching SAE record keeping efficiently.

This unit works well using either [EZ Records](#) or paper record books.

R9815 *Practice Problem* is available individually for \$6.00 each

R9815-PK *Practice Problem* bundle of 10 = \$55.00

Please see the tear sheet for ordering. DW



Coming Soon.....

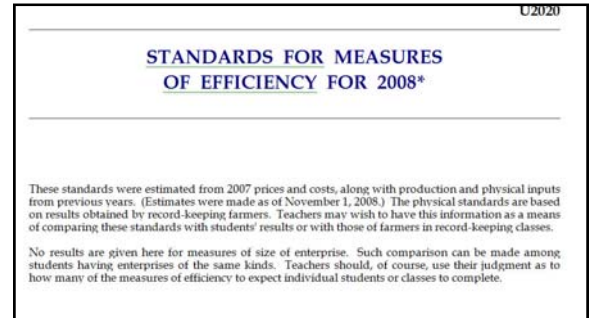
Take note that a new edition of the *Illinois Agronomy Handbook*, last revised in 2002, will be published in Spring 2009. No comparable publication exists among the Midwestern land-grant universities, and it's a reference work you don't want to be without. The new edition, which will include color photographs and graphics for the first time, will present new nitrogen guidelines, new data from research, and information needed to keep up with the rapidly changing world of crop and soil management and crop protection in Illinois.

Watch future issues of *News & Notes* for more details.

U2020 Standards for Measures of Efficiency for 2007

This 6-page manuscript is revised annually utilizing data from the Illinois Farm Business Management Association (FBFM) and the Illinois Statistics Service. The information in U2020 is important to measuring the efficiency of students' supervised experience programs. Also, students starting new SAEP record books can find some livestock and crop budget information here.

U2020 is posted as a free download in PDF format on the ITCS Instructional Materials web page (im.itcs.uiuc.edu). Using the free Adobe Acrobat Reader software, you can open the file to view or print it, as well as searching the text—a simple and efficient way to locate needed information. Be sure to review the ITCS Instructional Materials web site regularly for new items. DW



Terrific Teachable Moments: Grades 7 Through 12

Terrific Teachable Moments: Grades 7 Through 12 is a set of hands-on, minds-on character development activities for those who work with teens. The activities address specific skills and behaviors identified by teachers and counselors as important to student success in the classroom and beyond. The skills and behaviors encompass both performance character (e.g., responsibility, perseverance, positive attitude) and ethical character (e.g., integrity, respect, cooperation).

Each activity identifies the Illinois Learning Standards and Illinois Social/Emotional Learning Standards that it addresses as well as the "Smart and Good High Schools: Promising Practices" addressed.

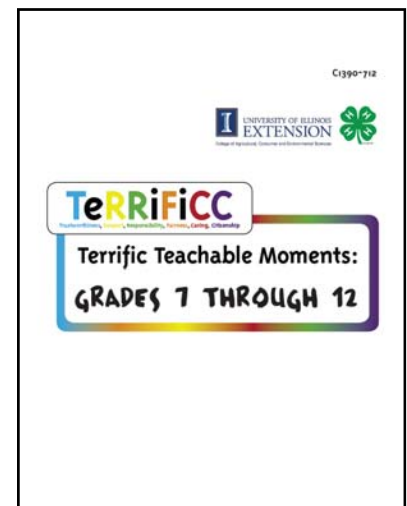
Terrific Teachable Moments: Grades 7 Through 12 is the third in a series of character education activities for children and youth. Its activities differ developmentally from the versions for younger students as they build on the skills addressed at the younger ages, are longer, and include more in-depth discussions that utilize the capabilities and interests of junior and senior high students.

Terrific Teachable Moments resources were developed to enhance and reinforce a school's existing social, emotional and character development programs. The 7–12 grade version has 102 pages and comes in a 8½ X 11-inch spiral bound format.

To order *Terrific Teachable Moments: Grades 7 Through 12* (or its counterparts for younger students, *Terrific Teachable Moments: Pre-K Through Grade 2* and *Terrific Teachable Moments: Grades 3 Through 6*), visit our e-commerce site: <https://www.pubsplus.uiuc.edu/C1390-712>

Price: \$20.00

MB



Revised EZ Records

EZ Records has been revised to provide an improved record keeping system. December 13, 2008 the revised EZ Records was moved to the public server and became the version all users will access. The revision includes both small and major changes to approximately 26 different pages. Many of the revisions will be small and not create a wrinkle as users work with the various pages. A few pages appear completely different and will require some manual editing by users to make sure the data is located in the correct location. Pages requiring special attention include Receipts, Expenses, and Non-depreciable Inventory from the enterprise pages. Core pages requiring special attention include the revised Financial Statement page; this page requires users to re-enter all data. The diverse nature of the entries prevented any logical approach to transferring data. We apologize for any inconvenience this has created. A new page, Personal Spending, appears with two tables, one for educational expenses and the second for personal expenses.

As you review the EZ Records revisions, please keep in mind the record book serves three distinct functions, a business record, tax record, and a record for users to verify the many FFA/Ag Education awards, leadership, participation, and recognition opportunities. Notify Dave Wilson at ITCS, dkwilson@illinois.edu if you have suggestions and comments regarding EZ Records. DW

Revised Print Record Book

The R9800 series of print record books is also being revised. ITCS will continue shipping print record books from the current inventory until the inventory is depleted. As the inventory of current record books is depleted the revised record books will be shipped. The revised print record book will closely mirror EZ Records. Major revision to the Receipts, Expenses, and Non-depreciable Inventory pages has created pages with several tables for sub-categories on these pages. Extra pages will be available for select pages, including Receipts, Cash and Non-Cash Expenses, and Non-depreciable Inventory. DW

EZ Records Tips and Information

Renewing EZ Records subscriptions. A number of teachers have called us to inquire about renewing EZ Records subscriptions. Users will view a notice in the upper right corner of the Record Book Main Page 30 days prior to their subscription expiration with the notice counting from 30 to 0 days to renew the subscription. Immediately behind the notice is a Renew link. Clicking the link will open the renew window. With the renew window open, users are asked to enter a NEW access code and click the Validate Code button. This action renews the account access for an additional 14 months and navigates to the Record Book Main Page.

If a user attempts to login and the renew window opens, the account has expired. Users are asked to enter a NEW access code and click the Validate Code button. This action renews the account and navigates to the Record Book Main Page. NO data has been lost, and the record books are ready for the user to continue. The account has been renewed for an additional 14 months.

Creating a new record book. As users complete their current record period or if a user wishes to enter previous record books, a new record book is created by clicking the Create New Record Book link on the Record Book Main Page. A window opens for the user to name the record book, enter a new name (User Name, record year, Dave Wilson, 2009) and click the Save button. Users are reminded that all record books should be located using a single login. The EZ Records software will automatically select the newest record book as the Default record book. DW

Meats Evaluation and Technology Career Development Event

The 2009 State IAVAT Meats Evaluation and Technology CDE will be held on Saturday, March 7, at the University of Illinois. Registration will be from 9:00 until 9:45 a.m. in the Stock Pavilion. The event will begin at 10:00 a.m. in the Meat Sciences Laboratory. Registration fees are \$7.00 per participant for IAVAT members and \$28.00 per participants for nonmembers. Optional preregistration is due to the State IAVAT office by February 20th with fees included. Scantrons will be used for the event. **Each participant is required to bring a clipboard, a couple of pencils, a frock, and a hair net.** Hard hats are not required, but the frock and hair net must be worn through the entire event. Participants are encouraged to dress properly for judging in the cold storage areas. Please refer to the *Meats Evaluation and Technology Career Development Event Rules* and the *IAVAT General Rules* for more information.

Meat Identification Series

The following items can be used to prepare for the Meats CDE. Ordering information is on the tear sheet.

- **MDS100** – *Meat Cut Identification and Technology* is an onscreen instructional material that follows the same format as **MDS707a- Weed Identification Digital Slide Sets**. This set is composed in Microsoft PowerPoint and should run well on PCs or Macs. Image quality is excellent and includes a wide array of information on beef, pork, and lamb cut identification, location of cut on the carcass, and cooking methods. Also included in the CD is an orientation session that includes primal cut identification and definitions of the different types of cuts. It includes all the meat cuts on the IAVAT meat identification list.

Presentations include a regular set with images and text descriptions of the cuts, a practice set that includes only the identification features without the names of the cuts, a practice contest that includes 30 images, and an interactive quizzing presentation which allows the user to identify the proper cut among three. In all, this CD includes over 700 slides.

- **MDS100-10** – *Meat Cut Identification and Technology Quiz Pack* of 10 CD-ROMs containing **practice set, practice contest, and interactive quizzes only** from MDS100.
- **J180f** – *Meat Judging and Grading Manual* NRW



State Parliamentary Procedure Event

The State Parliamentary Procedure Event is scheduled for Saturday, March 7th 2009. It will be hosted at the University of Illinois College of ACES Funk Library and Alumni Center. This is a new location for the event.

Schools must pre-register for the event and are limited to the top two teams from each district.

For more information please contact the Illinois FFA Center. NRW

State Poultry Career Development Event

The 2009 State IAVAT State Poultry CDE will be held at Shelbyville High School on Saturday, March 14th. Registration will be from 9:00 a.m. until 9:45 with the event beginning at 10:00 a.m. The registration fee is \$7.00 per participant for IAVAT members and \$28.00 per participant for nonmembers.

Classes to be evaluated-

- Breaded Chicken Patties
- Place 2 to 3 production rings- placed on past egg production
- Place a carton of eggs, according to the latest USDA standards
- Grade 10 interior quality eggs, according to the latest USDA standards
- Grade 10 exterior quality eggs, according to the latest USDA standards
- Grade 10 broiler carcasses (2 to 6 lbs.), according to the latest USDA standards
- Identify 23 broiler parts
- Take the 2006 written exam consisting of 25 multiple-choice questions

Questions on the exam will be taken from the information in U1052 *Caring for the Small Laying Flock* (out of print); [J120b](#) *Judging and Grading Poultry and Eggs*; and *Poultry Science Manual for National FFA Contest*, No. 0418-4, fourth edition. The manual can be purchased from IMS, Texas A & M University (979) 845-6608. Item [J120b](#) can be found on the tear sheet.

For additional information refer to the *General Rules* and the rules for the *Poultry CDE* from IAVAT. A team may consist of five members with the top three scores used to calculate team scores. The low individuals on the team will not be eligible for individual awards. NRW

Illinois Beef Expo

The Illinois Beef Association will host the 2009 Beef Expo at the State Fairgrounds from February 19 through 22. Admission is free everyday except for Sunday, February 22. Multiple events occur throughout the Expo, including Breed Sales, a Trade Show, Judging Contest, Quiz Bowl, and Livestock Shows. For more information go to their website at www.illinoisbeefexpo.com. NRW

State Dairy Foods Career Development Event Results

December 13, 2008 University of Illinois
32 schools, 27 teams, 121 individuals

Top Teams

Rochelle
Prairie Central
Seneca
Paxton-Buckley-
Loda

Top Individuals

Jessica Keys, Rochelle
Lyle Schaffer, Prairie Central
Thane Zehr, Prairie Central
Kate Kirkton, Seneca
Brandon Magers, PBL
Steven Beisswenger, Seneca
Lauren Schabacker, Rochelle
Samantha Agney, Shelbyville
Kristen Springer, Jerseyville
Ethan Ringhausen, Jerseyville
Robin Etnyre, Oregon



State Crops Career Development Event Results

December 13, 2008 University of Illinois
43 schools, 40 teams, 124 individuals



Superior Teams

Prairie Central
Crescent-Iroquois
Paxton-Buckley-Loda
Galva
Greenville
Midland

Superior Individuals

Clayton Carley, Crescent-Iroquois
Katie Schaffer, Prairie Central
Timothy Hartman, Prairie Central
Joel Braun, Midland
Dallas Glazik, PBL
Nicholas Suess, Greenville
Ed Chouinard, Clifton Central
Jacob Sappington, Cumberland
Collin Lynch, Taylorville
Devin Hammer, Beecher City

State Agronomy Career Development Event

Placings and Cuts

The state event was held Saturday, December 13 at the University of Illinois.

1. Soybeans Placing 3-2-1-4
 Cuts 3-5-3

Sample 3 contains inert material. Sample 2 contains common weed and foreign material. Sample 1 has noxious weed seed and is not uniform in size. Sample 4 contains 2 noxious weeds.

2. Corn Placing 3-2-4-1
 Cuts 1-2-4

Sample 3 is the top of the class. Sample 2 kernels are not uniform. Sample 4 contains inert material, broken kernels and broken tip caps. Sample 4 has diseased, sprouted, and molded kernels.

3. Hay Placing 2-1-3-4
 Cuts 3-5-2

Sample 2 was early bloom, leafy, soft, & free of foreign material (FM). Sample 1 early blossom, green and free of FM. Sample 3 contains more stems. Sample 4 has stems and FM.

4. Wheat Placing 4-3-1-2
 Cuts 2-3-5

Sample 4 is the top sample although it contains corn. Sample 3 contains broken berries and inert material. Sample 1 contains barley. Sample 2 noxious weed seed, wild carrot.

2009 Illinois Sheep Shearing School

The 2009 Illinois Sheep Shearing School will be held Friday April 17th and Saturday April 18th at the Livestock Pavilion, Western Illinois University in Macomb. School will begin at 10 a.m. on the 17th and continue till 5 p.m. On Saturday the 18th school will start at 8 a.m. and continue till 3 p.m.

Cost of the school is \$50 per person. Equipment will be supplied by the school. Students will learn to properly maintain equipment, as well as to shear. Youth and adults may enroll in shearing school. Students should be over 15 years of age and have enough size and strength to handle mature sheep. They should also have a sincere interest in sheep production and have a chance to shear sheep after the school. This year, individuals who have completed the course before may also enroll again. This will provide an excellent opportunity to improve their skills.

The school will be limited to 20 students. We will accept enrollments in the order in which they are received at this office.

For more information or to register, contact Richard Cobb, Extension Sheep Specialist, at 217-333-7351 or email at arcobb@illinois.edu

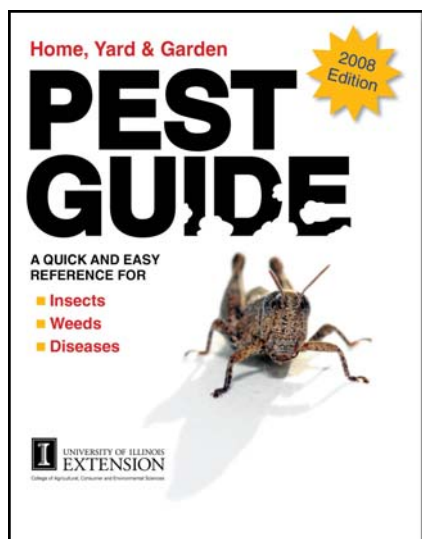


ExplorACES

Mark your calendar for March 13 and 14, 2009 for this college-wide event. ExplorACES specifically focuses on high school students interested in agriculture as they continue their education.

Join us for ExplorACES, celebrating the students and science in the College of ACES! Through several hands-on exhibits and interaction with students and staff currently in the college of ACES, prospective students will have a chance explore the possibility of fitting the College of ACES into their future.

For more information contact Jason Emmert, Assistant Dean, Academic Programs at jemmert@illinois.edu ExplorACES is held during the same weekend as engineering open house. DW



Home, Yard & Garden Pest Guide

NEW

The new, revised edition of this popular resource includes up-to-date information on how to deal with insects, weeds, and diseases safely and effectively. The *Home, Yard & Garden Pest Guide* provides information on how to choose the right pesticides and handle chemicals with confidence. Non-chemical alternatives are included for most management strategies.

Contains:

- Easy-to-read charts and tables with chemical applications and current herbicide recommendations
- Weed, insect, and disease information grouped by type of problem
- Integrated Pest Management strategies and pesticide safety

The 2008 edition includes revised chemical recommendations and updated information. Also new is a handy index that helps you quickly find the information you need.

C1391-08 *Home, Yard & Garden Pest Guide* sells for \$24.95.

Contact the Staff

Orders (800) 345-6087
 FAX (217) 333-3917
im.itcs.uiuc.edu

Online ordering
pubsplus.uiuc.edu

Taft House
 Fax (217) 333-0005

Nick Wherley, Animal Sciences
wherley@illinois.edu
 (217) 244-5170

Dave Wilson, Agricultural Mechanics
dkwilson@illinois.edu
 (217) 244-5171



**ITCS Instructional Materials
University of Illinois at
Urbana-Champaign**

**ORDERS
Phone 800 345-6087
Fax 217 333-3917**

*Resources for agricultural
education*

News and Notes is published 5 times annually (September, November, January, March, and May) by ITCS Instructional Materials at the University of Illinois. Articles submitted for publication should conform to *News and Notes* specifications (available on request) and be clearly identified. Articles submitted by the 20th day of the month preceding each issue will be considered for publication in the next issue of *News and Notes*. For additional information, contact *News and Notes* Editor, ITCS Instructional Materials, University of Illinois, (217) 244-5170.

Dates to Remember 2009 Calendar of Events

January

1 New Year's Day, UIUC holiday
19 Martin Luther King, Jr. Day, UIUC holiday
23 Made for Excellence Conference

February

6 PAS Annual Conference, Richland College
16 State Parliamentary Procedure CDE, Lincoln Land Community College

March

7 State Meats Evaluation and Technology Career Development Event, UIUC, Urbana
7 State Parliamentary Procedures Event, UIUC, Urbana
14 State Poultry Career Development Event, Shelbyville High School, Shelbyville

April

3 State Star Selection, Parkland Community College
4 State FFA Awards Day, UIUC
28 State Dairy Cattle Evaluation, Livestock, and Horticulture Career Development Events, UIUC, Urbana

May

2 State Creed, Extemporaneous, and Prepared Public Speaking CDE, ISU
6 State Agricultural Business Management Career Development Event
19 State Agricultural Mechanics Career Development Event, UIUC
25 Memorial Day, UIUC holiday

**January 2009
TEAR SHEET**

Visit pubsplus.uiuc.edu to order items on our secure server
(credit cards and school purchase orders accepted;
prices subject to change)

Qty.	Price	Amt.	Cat. No.	Description
_____	8.00	_____	C1388-08	83rd Annual Summary of Illinois Farm Business Records: 2007
_____	20.00	_____	C1390-712	Terrific Teachable Moments: Grades 7 Through 12
_____	24.95	_____	C1391-08	Home, Yard & Garden Pest Guide
_____	40.00	_____	DT200b	Record Book Resource Package
_____	4.50	_____	J120b	Judging and Grading Poultry and Egg manual
_____	4.50	_____	J181f	Meat Identification manual
_____	82.50	_____	MDS100	Retail Meat Cut Identification and Technology CD-ROM
_____	225.00	_____	MDS100-10	Retail Meat Cut Identification and Technology Quiz Pack (10 CD-ROMs)
_____	6.00	_____	R2006	EZ Records subscription
_____	2.75	_____	R9800	Records of My Supervised Agricultural Experience Program
_____	2.50	_____	R9801	Animal Enterprise Record Sheets for SAE Programs
_____	2.50	_____	R9802	Business Enterprise Record Sheets for SAE Programs
_____	2.50	_____	R9803	Crop Enterprise Record Sheets for SAE Programs
_____	6.00	_____	R9815	Practice Problems
_____	55.00	_____	R9815-PK	Practice Problems bundle of 10
_____	2.50	_____	R9818	Agriscience Enterprise Research Agreement for SAE Programs

Name _____ Date _____ P.O. _____
 School _____ Email _____
 Address _____
 _____ Zip _____
 Billing _____

 F.E.I. No. _____ or S.S. No. _____ Phone _____
 (For schools or companies) (For individuals)

Minimum amount for a **charge order** (including shipping) is \$10.00. Checks should be made payable to the **UNIVERSITY OF ILLINOIS** but sent to Information Technology and Communication Services, 1917 S. Wright St., Champaign, IL 61820. For orders only call (800) 345-6087 or (217) 333-3871 or FAX (217) 333-3917 or send e-mail to pubsplus@illinois.edu. We accept VISA and MasterCard.

***If payment is sent with this order, please include the following for shipping:**

		Subtotal	_____
For orders less than \$5 add	\$3.50	Shipping*	_____
For orders from \$5 to \$19.99 add	\$4.50		
For orders from \$20 to \$99.99 add	\$7.50		
For orders from \$100 to \$199.99 add	\$10.00		
For each additional \$100 add	\$4.50	TOTAL	_____

Monthly Feed Prices

Kinds of Feed	October 23	January 6
Corn, No. 2, shelled, bu. ¹	3.47	3.98
Corn, ground, shelled, bu.	3.61	4.12
Grain sorghum, bu. ²	2.41	3.02
Grain sorghum, ground, bu.	2.55	3.16
Oats, bu. ³	2.55	2.23
Oats, ground, bu.	2.65	2.33
Wheat, bu.	5.52	5.02
Soybean meal, 48%, ton	374.25	304.25
Corn silage, ton ⁴	21.90	25.11
Hay, alfalfa, baled, ton ⁵	188.75	197.50
Hay, other, baled, ton ⁵	165.00	167.50
Straw, oat or wheat, ton ⁵	95.00	110.00

¹ Based on prices at country elevators in central Illinois.

² Based on prices at country elevators in southern Illinois.

³ Based on prices at CBOT.

⁴ Estimated silage value as opportunity cost of harvesting crop as grain.

⁵ Based on prices direct off the farm in central Illinois.

